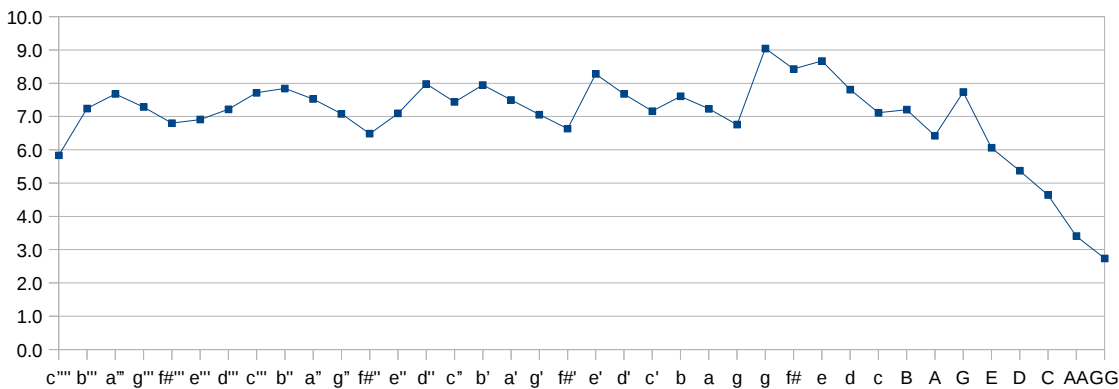


Kildare harp string chart. Gauges approx. as found
Simon Chadwick, May 2018



Pin	Shoe	freq	Note	Length (cm)	Length (in)	Gauge (mm)	Gauge (in)	Tension	Metal
1	1	2092	c'''	5.5	2.2	0.4	0.016	5.8	brass
2	2	1972	b'''	6.5	2.6	0.4	0.016	7.2	brass
3	3	1760	a'''	7.5	3.0	0.4	0.016	7.7	brass
4	4	1568	g'''	8.2	3.2	0.4	0.016	7.3	brass
5	5	1396	f#'''	8.9	3.5	0.4	0.016	6.8	brass
6	6	1318	e'''	9.5	3.7	0.4	0.016	6.9	brass
7	7	1174	d'''	10.9	4.3	0.4	0.016	7.2	brass
8	8	1046	c''	11.5	4.5	0.44	0.017	7.7	brass
9	9	986	b''	12.3	4.8	0.44	0.017	7.8	brass
10	10	880	a''	13.5	5.3	0.44	0.017	7.5	brass
11	11	784	g''	14.7	5.8	0.44	0.017	7.1	brass
12	12	698	f#''	15.8	6.2	0.44	0.017	6.5	brass
13	13	659	e''	17.5	6.9	0.44	0.017	7.1	brass
14	14	587	d''	19.1	7.5	0.48	0.019	8.0	brass
15	15	523	c''	20.7	8.2	0.48	0.019	7.4	brass
16	16	493	b'	22.7	8.9	0.48	0.019	7.9	brass
17	17	440	a'	24.7	9.7	0.48	0.019	7.5	brass
18	18	392	g'	26.9	10.6	0.48	0.019	7.1	brass
19	19	349	f#'	29.3	11.5	0.48	0.019	6.6	brass
20	20	329.5	e'	32.0	12.6	0.52	0.02	8.3	brass
21	21	293.5	d'	34.6	13.6	0.52	0.02	7.7	brass
22	22	261.5	c'	37.5	14.8	0.52	0.02	7.2	brass
23	23	246.5	b	41.0	16.2	0.52	0.02	7.6	brass
24	24	220	a	44.8	17.7	0.52	0.02	7.2	brass
25	25	196	g	48.6	19.1	0.52	0.02	6.8	brass
26	26	196	g	52.2	20.6	0.56	0.022	9.0	brass
27	27	174.5	f#	56.6	22.3	0.56	0.022	8.4	brass
28	28	164.75	e	60.8	24.0	0.56	0.022	8.7	brass
29	29	146.75	d	64.8	25.5	0.56	0.022	7.8	brass
30	30	130.75	c	69.4	27.3	0.56	0.022	7.1	brass
31	31	123.25	B	74.1	29.2	0.56	0.022	7.2	brass
32	32	110	A	78.4	30.9	0.56	0.022	6.4	brass
33	33	98	G	83.2	32.8	0.65	0.026	7.7	brass
34	34	82.375	E	87.6	34.5	0.65	0.026	6.1	brass
35	35	73.375	D	92.6	36.5	0.65	0.026	5.4	brass
36	36	65.375	C	96.6	38.1	0.65	0.026	4.6	brass
37	37	55	AA	98.4	38.8	0.65	0.026	3.4	brass
38	38	49	GG	99.0	39.0	0.65	0.026	2.7	brass
39							TOTAL	266.607	



*Lengths are calculated from laser-scan data generated by Elaina Sugrue in 2017
and represent the harp in its current state
Estimated accuracy of string lengths +/- 2mm
Gauges are slightly heavier than measurements by Natalie Surina 2017
(rounded up to nearest modern size)*

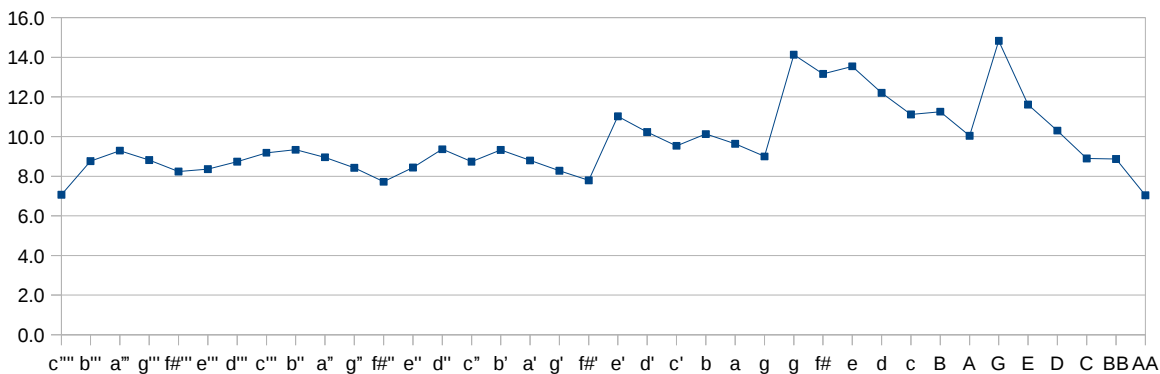
Kildare harp string chart. Suggested light stringing regime



Simon Chadwick, May 2018

Pin	Shoe	freq	Note	Length (cm)	Length (in)	Gauge (mm)	Gauge (in)	Tension	Metal
1	1	2092	c'''	5.5	2.2	0.44	0.017	7.1	Yellow brass
2	2	1972	b'''	6.5	2.6	0.44	0.017	8.8	Yellow brass
3	3	1760	a'''	7.5	3.0	0.44	0.017	9.3	Yellow brass
4	4	1568	g'''	8.2	3.2	0.44	0.017	8.8	Yellow brass
5	5	1396	f#'''	8.9	3.5	0.44	0.017	8.2	Yellow brass
6	6	1318	e'''	9.5	3.7	0.44	0.017	8.4	Yellow brass
7	7	1174	d'''	10.9	4.3	0.44	0.017	8.7	Yellow brass
8	8	1046	c''	11.5	4.5	0.48	0.019	9.2	Yellow brass
9	9	986	b''	12.3	4.8	0.48	0.019	9.3	Yellow brass
10	10	880	a''	13.5	5.3	0.48	0.019	9.0	Yellow brass
11	11	784	g''	14.7	5.8	0.48	0.019	8.4	Yellow brass
12	12	698	f#''	15.8	6.2	0.48	0.019	7.7	Yellow brass
13	13	659	e''	17.5	6.9	0.48	0.019	8.4	Yellow brass
14	14	587	d''	19.1	7.5	0.52	0.02	9.4	Yellow brass
15	15	523	c''	20.7	8.2	0.52	0.02	8.7	Yellow brass
16	16	493	b'	22.7	8.9	0.52	0.02	9.3	Yellow brass
17	17	440	a'	24.7	9.7	0.52	0.02	8.8	Yellow brass
18	18	392	g'	26.9	10.6	0.52	0.02	8.3	Yellow brass
19	19	349	f#'	29.3	11.5	0.52	0.02	7.8	Yellow brass
20	20	329.5	e'	32.0	12.6	0.6	0.024	11.0	Yellow brass
21	21	293.5	d'	34.6	13.6	0.6	0.024	10.2	Yellow brass
22	22	261.5	c'	37.5	14.8	0.6	0.024	9.5	Yellow brass
23	23	246.5	b	41.0	16.2	0.6	0.024	10.1	Yellow brass
24	24	220	a	44.8	17.7	0.6	0.024	9.6	Yellow brass
25	25	196	g	48.6	19.1	0.6	0.024	9.0	Yellow brass
26	26	196	g	52.2	20.6	0.7	0.028	14.1	Yellow brass
27	27	174.5	f#	56.6	22.3	0.7	0.028	13.2	Yellow brass
28	28	164.75	e	60.8	24.0	0.7	0.028	13.5	Yellow brass
29	29	146.75	d	64.8	25.5	0.7	0.028	12.2	Yellow brass
30	30	130.75	c	69.4	27.3	0.7	0.028	11.1	Yellow brass
31	31	123.25	B	74.1	29.2	0.7	0.028	11.3	Yellow brass
32	32	110	A	78.4	30.9	0.7	0.028	10.0	Yellow brass
33	33	98	G	83.2	32.8	0.9	0.035	14.8	Red Brass
34	34	82.375	E	87.6	34.5	0.9	0.035	11.6	Red Brass
35	35	73.375	D	92.6	36.5	0.9	0.035	10.3	Red Brass
36	36	65.375	C	96.6	38.1	0.9	0.035	8.9	Red Brass
37a	37	61.625	BB	102.3	40.3	0.9	0.035	8.9	Red Brass
38a	38	55	AA	102.1	40.2	0.9	0.035	7.0	Red Brass
38	39	49	GG	101.3	39.9	0.9	0.035	5.5	Red Brass

TOTAL 375.6



Measurements are calculated from laser-scan data generated by Elaina Sugrue in 2017 and represent the harp in its current state but using blocked pin holes 37a and 38a instead of 37 and 38. Estimated accuracy of string lengths +/- 2mm